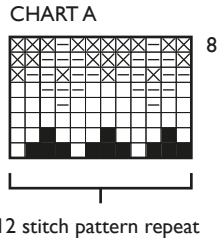
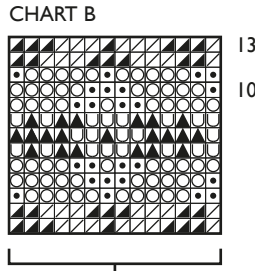


KEY

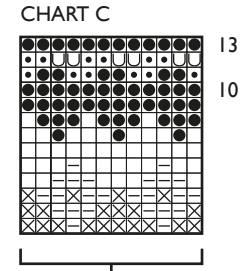
- A. ■ Bramble 155
- B. □ Mooskit 106
- C. – Damask 567
- D. × Camel 141
- E. / Steel 320
- F. ▲ Shaela 102
- G. ○ Laurel 329
- H. • Moss 147
- I. ▲ Tundra 190
- J. ∪ Yellow Ochre 230
- K. ● Paprika 261



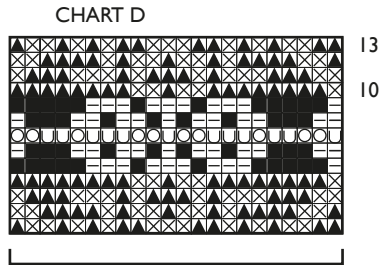
12 stitch pattern repeat



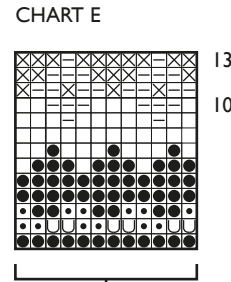
14 stitch pattern repeat



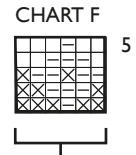
12 stitch pattern repeat



22 stitch pattern repeat



12 stitch pattern repeat



6 stitch pattern repeat